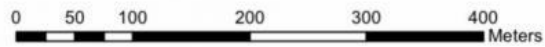
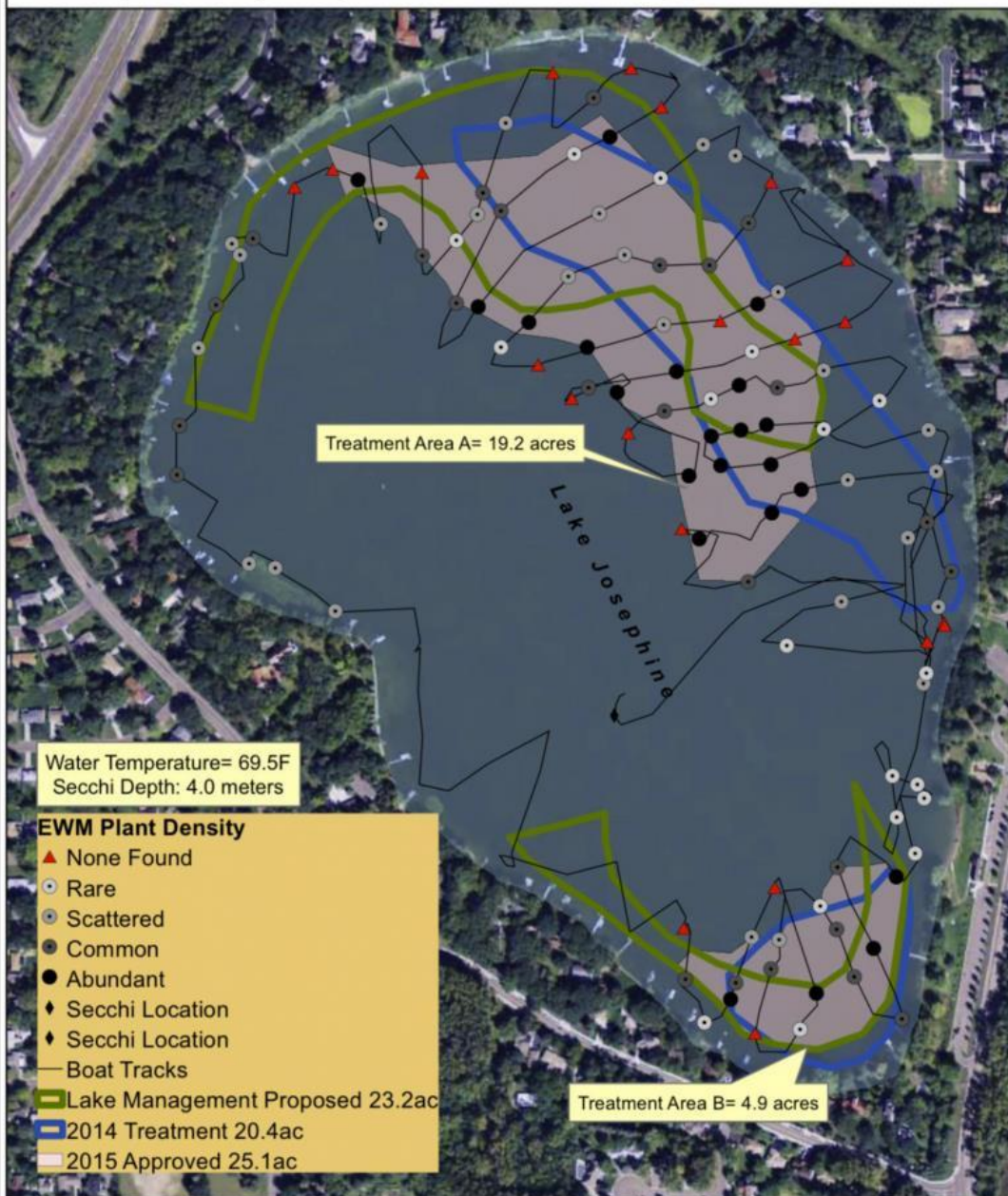


## Offshore 2015 Treatment Plan

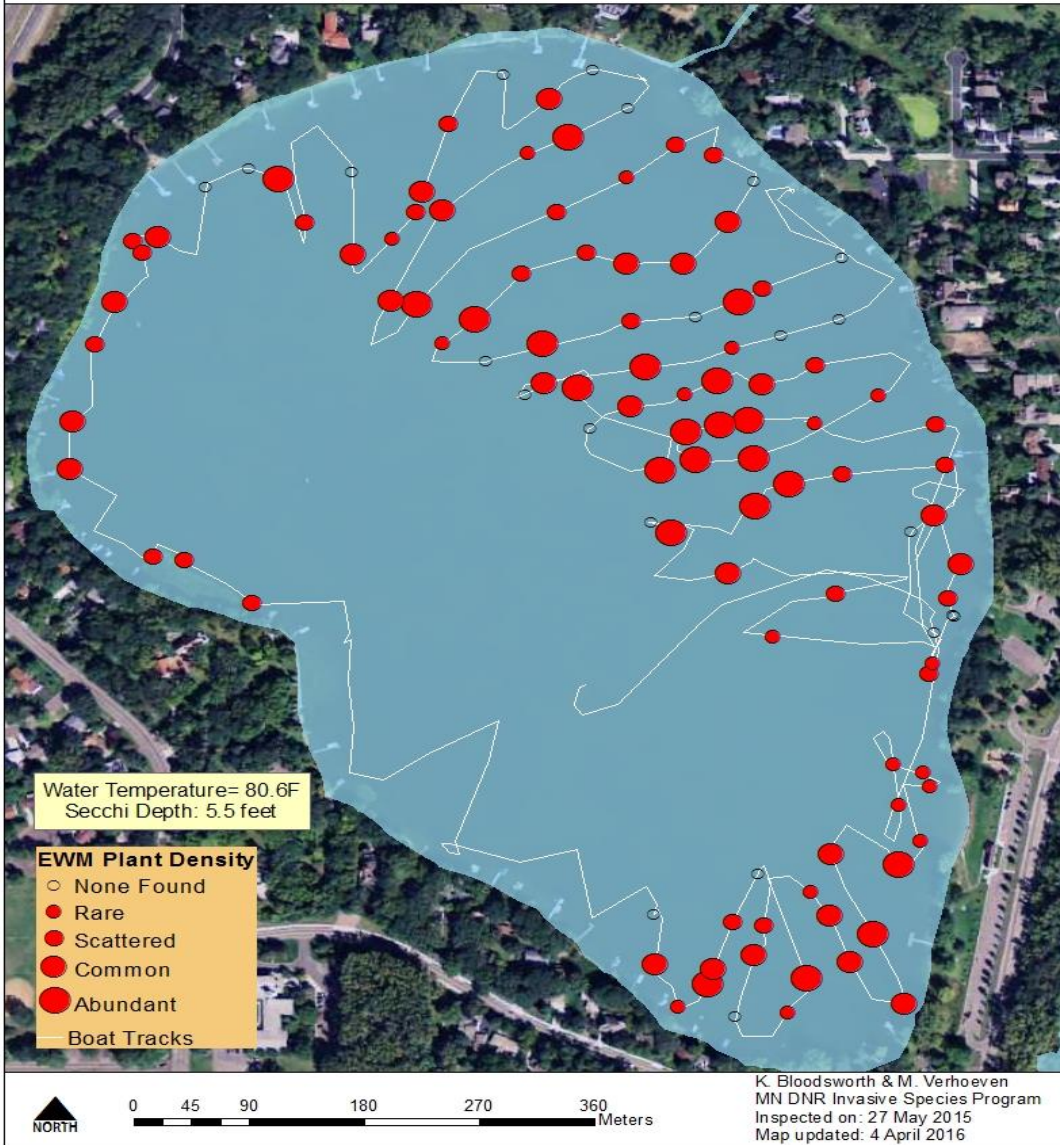
- Lake Josephine Improvement Association applied for—and was granted—a variance from DNR to treat beyond the 15% littoral limit due to our large infestation of Eurasian Water Milfoil (EWM).
- DNR allowed us to treat 24.1 offshore acres in 2015, which is roughly three times our normal allowance of 7.9 acres.
- Offshore spraying for EWM took place in late June and noticeably reduced the amount of EWM in the lake.
- Note: DNR determines the "map" of offshore areas to be treated based upon where the milfoil is the most dense and most hazardous to lake users—the Board has no jurisdiction.
- After consulting with DNR and our treatment vendor, we decided NOT to conduct off-shore treatment of the Filamentous Algae, as it is an infestation that tends to break up on its own. It's often held on the surface of the lake by EWM, so the EWM treatment also had the added benefit of helping to dissipate it.
- Two rounds of onshore treatment--for those who contracted for it—occurred in mid-June and mid-July. The broad-spectrum herbicide used kills EWM as well as Curly Leaf Pondweed, Filamentous Algae, and White Stem Pondweed. Unfortunately, the White Stem Pondweed stalks may not disintegrate and may need to be physically removed by homeowners.

**Lake Josephine, Ramsey County: 2015 Eurasian Watermilfoil, Approved Treatment Areas**



K. Lund, K. Bloodsworth, M. Verhoeven  
MN DNR Invasive Species Program  
Inspected on: 27 May 2015  
Map created on: 2 June 2015

**Lake Josephine, Ramsey County: 2015 Eurasian Watermilfoil Density**



# Lake Josephine, Ramsey County: 2015 Curly-leaf pondweed Density

